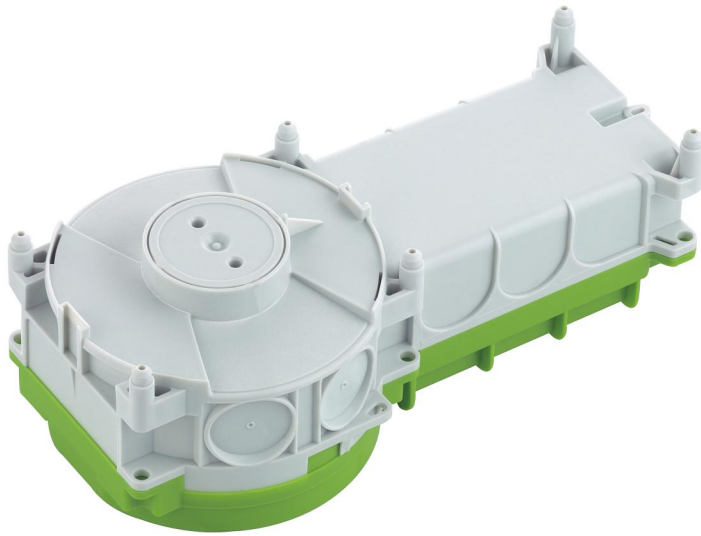


Installation housing

IBTronic H120TT-68



IBTronic H120TT-68

Installation housing

Productnumber: 97620501

Dimensions: 306 x 150 x 106 mm

Installation housing, for site cast or prefabricated concrete structures, for the installation of LV/HV/LED-luminaires and loudspeakers, suitable for adhesive fixing and opposing shuttering, for installation in ceilings from 140 mm, wall installation with IBT support spars, for the installation of VDE-approved lights per DIN EN 60598 (VDE 0711), as well as with F identification or MM identification, with additional connection space (e.g. for installing an electronic safety transformer up to max. 150 VA), protection class IP30, rated insulation voltage: 400V AC, Halogen free

Outlet aperture: Ø 68 mm. For the installation of VDE-tested luminaires in accordance with DIN EN 60598 (VDE 0711), and with F-identification or MM-identification, maximum installation depth LV luminaires: 75 mm, HV lights: 80 mm, lamp output halogen max. 50 W, lamp output, LED max. 20 W, adhesive fixing or nail installation, membrane for perforation, sealing range M16 - M32



Technical Data

electrical characteristics

Rated insulation voltage AC:	400 V
Type of protection:	IP30
Suitable for:	Concrete construction

Colours

Cover colour:	other
---------------	-------

Dimensions

Width:	306 mm
Length:	150 mm
Height:	106 mm
Inner height:	80 mm

Material characteristics

Halogen free:	yes
Flammability class according with UL94:	HB
Glow-wire flammability according to EN 60695-2-11:	650 °C
Industry quality:	no

mechanical properties

Type of fastening:	adhesive fixing or nail installation
--------------------	--------------------------------------

Ambient conditions

max. relative humidity 25°C:	- %
max. relative humidity 40°C:	50 %
Min. ambient temperature:	-25 °C
Max. ambient temperature:	40 °C
24h ambient temperature:	35 °C

Material

Base unit material:	Polypropylene
Cover material:	Polypropylene

Accessories

[97980001 - NS 35-90 - Standard rail](#)

[97921801 - NAH IBTronic H 120 - Nailing tool](#)

[97953201 - K0 K15 BL - Blank strip](#)

[97957001 - STH 70 - Support spar](#)

[97959001 - STH 90 - Support spar](#)

[97960001 - STH 100 - Support spar](#)

[97961001 - STH 110 - Support spar](#)

[97963001 - STH 130 - Support spar](#)

[97964001 - STH 140 - Support spar](#)

[97965001 - STH 150 - Support spar](#)

[97967001 - STH 170 - Support spar](#)

[97969001 - STH 190 - Support spar](#)

[97973001 - STH 230 - Support spar](#)

[97974001 - STH 240 - Support spar](#)

[97979001 - STH 290 - Support spar](#)

Cable gland

$6x \leq \varnothing 34 \text{ mm}$

