

Junction box

WKE 2 - 3 x 10²

This product is outdated. To the successor product:
<https://www.spelsberg.co.uk/p/86651201>

WKE 2 - 3 x 10²

Junction box

CUSTOMIZABLE

Productnumber: 86051201

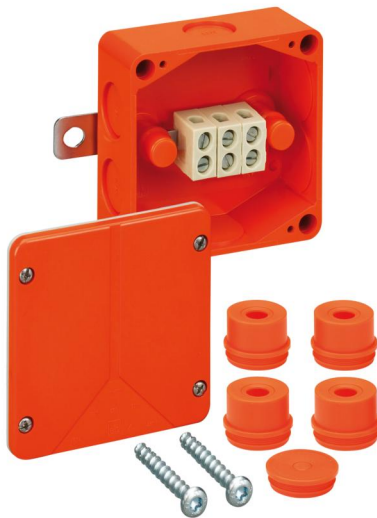
Dimensions: 100 x 100 x 50 mm

Junction box, protection class IP54/IP65, nominal cross-section 10 mm², U_i=450 V AC, certified by VDE (DIN EN 60670-1/-22 (VDE 0606-1/-22)), knockouts, M25, (6 side), external fixing lugs, with E30 - E 90 electrical functional integrity according to DIN 4102 Part 12. Halogen-free enclosure made of special thermosetting plastic, terminals made of special high-temperature-resistant ceramic.

orange, Connection box 3-pole 1 - 10 mm², junction box 3-pole 1 - 4 mm², number of clampable wires per pole: 10 x 1² / 8 x 1.5² / 6 x 2.5² / 4 x 4² / 2 x 6² / 2 x 10²

Accessories supplied:

4 off IP54 attachment bushes M25, 1 off IP54 sealing plug M25, sealing range 9 - 18.5 mm, Drilling template, D6 wall + ceiling attachment set



Technical Data

electrical characteristics

Rated insulation voltage AC:	450 V
Rated insulation voltage DC:	450 V
Max. conductor cross section:	10 mm ²
Protection class:	II
Type of protection:	IP54/IP65
Circuit integrity class:	E30/E60/E90
UL Type Rating:	not specified

Colours

Base unit colour:	orange
Cover colour:	orange

Dimensions

Width:	100 mm
Length:	100 mm
Height:	50 mm

Material characteristics

UV-resistant:	yes
Halogen free:	yes
Flammability class according with UL94:	V0
Glow-wire flammability according to EN 60695-2-11:	960 °C
Industry quality:	no

mechanical properties

Type of fastening:	Wall/ceiling mounting
Sealable:	no
Cover screw torque:	1.8 Nm
Fastening:	external fixing lugs

Ambient conditions

max. relative humidity 25°C:	95 %
max. relative humidity 40°C:	50 %
Min. ambient temperature:	-25 °C
Max. ambient temperature:	40 °C
24h ambient temperature:	35 °C
Installation location:	Indoors

Material

Base unit material:	Duroplast
Cover material:	Duroplast
Sealing material:	Thermoplastic elastomer
Cover screw material:	Stainless steel V2A

Certificates

Test mark:	VDE (DIN EN 60670-1/-22 (VDE 0606-1/-22))
------------	---

Accessories

[22762001 - KVR M20-MGM/or - Cable gland](#)

[22762501 - KVR M25-MGM/or - Cable gland](#)

[23062001 - AST M20/or - Attachment bushes](#)

[23062501 - AST M25/or - Attachment bushes](#)

[23162001 - VST M20/or - Sealing plugs](#)

[23162501 - VST M25/or - Sealing plugs](#)