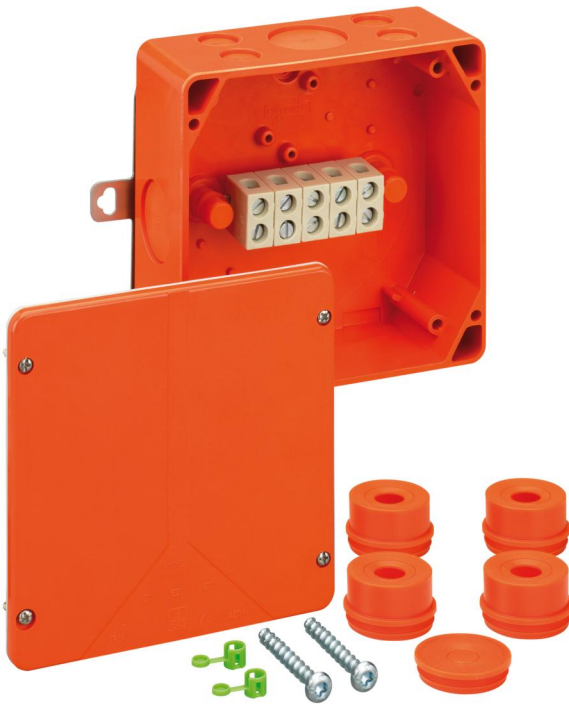


Junction box

## WKE 4 - 5 x 16<sup>2</sup>

This product is outdated. To the successor product:  
<https://www.spelsberg.co.uk/p/86650601>



## WKE 4 - 5 x 16<sup>2</sup>

Junction box

CUSTOMIZABLE

Productnumber: 86050401

Dimensions: 165 x 165 x 76 mm

Junction box, protection class IP54/IP65, nominal cross-section 16 mm<sup>2</sup>, U<sub>i</sub>=450 V AC, certified by VDE (DIN EN 60670-1/-22 (VDE 0606-1/-22)), knockouts, M20/M40, (12 side), external fixing lugs, with E30 - E 90 electrical functional integrity according to DIN 4102 Part 12. Halogen-free enclosure made of special thermosetting plastic, terminals made of special high-temperature-resistant ceramic.

**orange, Connection box 5-pole 1.5 - 16 mm<sup>2</sup>, junction box 5-pole 1.5 - 6 mm<sup>2</sup>, number of clampable wires per pole: 10 x 1.5<sup>2</sup> / 8 x 2.5<sup>2</sup> / 4 x 4<sup>2</sup> / 4 x 6<sup>2</sup> / 2 x 10<sup>2</sup> / 2 x 16<sup>2</sup>**

Accessories supplied:

**4 off IP54 attachment bushes M40, sealing range 17 - 30 mm, 1 off IP54 sealing plug M40, sealing range 17 - 30 mm, Drilling template, D6 wall + ceiling attachment set**



## Technical Data

### electrical characteristics

Rated insulation voltage AC:	450 V
Rated insulation voltage DC:	450 V
Max. conductor cross section:	16 mm <sup>2</sup>
Protection class:	II
Type of protection:	IP54/IP65
Circuit integrity class:	E30/E60/E90
UL Type Rating:	not specified

### Colours

Base unit colour:	orange
Cover colour:	orange

### Dimensions

Width:	165 mm
Length:	165 mm
Height:	76 mm

### Material characteristics

UV-resistant:	yes
Halogen free:	yes
Flammability class according with UL94:	V0
Glow-wire flammability according to EN 60695-2-11:	960 °C
Industry quality:	no

### mechanical properties

Type of fastening:	Wall/ceiling mounting
Sealable:	yes
Cover screw torque:	1.8 Nm
Fastening:	external fixing lugs

### Ambient conditions

max. relative humidity 25°C:	95 %
max. relative humidity 40°C:	50 %
Min. ambient temperature:	-25 °C
Max. ambient temperature:	40 °C
24h ambient temperature:	35 °C
Installation location:	Indoors

### Material

Base unit material:	Duroplast
Cover material:	Duroplast
Sealing material:	Thermoplastic elastomer
Cover screw material:	Stainless steel V2A

### Certificates

Test mark:	VDE (DIN EN 60670-1/-22 (VDE 0606-1/-22))
------------	---

## Accessories

[22762001 - KVR M20-MGM/or - Cable gland](#)

[22762501 - KVR M25-MGM/or - Cable gland](#)

[22763201 - KVR M32-MGM/or - Cable gland](#)

[22764001 - KVR M40-MGM/or - Cable gland](#)

[23062001 - AST M20/or - Attachment bushes](#)

[23062501 - AST M25/or - Attachment bushes](#)

[23063201 - AST M32/or - Attachment bushes](#)

[23162001 - VST M20/or - Sealing plugs](#)

[23162501 - VST M25/or - Sealing plugs](#)

[23163201 - VST M32/or - Sealing plugs](#)