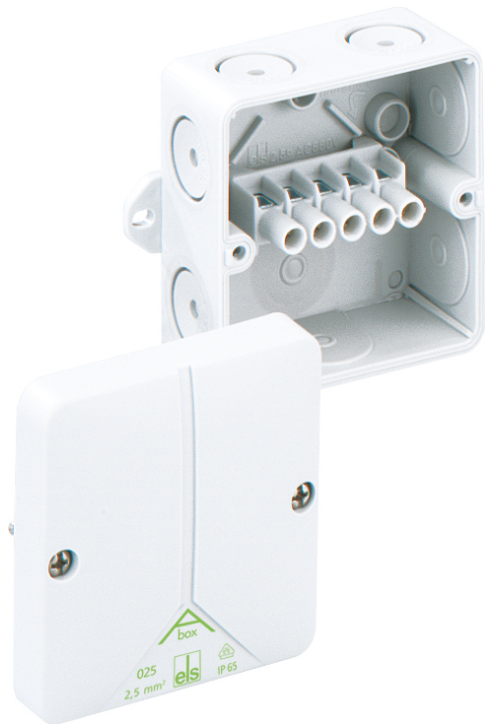


Junction box

## Abox 025 AB-2,5<sup>2</sup>/w



### Abox 025 AB-2,5<sup>2</sup>/w

Junction box

CUSTOMIZABLE

Productnumber: 80310701

Dimensions: 80 x 80 x 52 mm

Junction box, protection class IP65, nominal cross-section 2.5 mm<sup>2</sup>, U<sub>i</sub>=690 V AC, certified by VDE (DIN EN 60670-1/-22 (VDE 0606-1/-22)), self-sealing, soft insertion membranes, M20, sealing range 2 - 16 mm, (1 rear, 7 side), external fixing lugs, for standard indoor installations

**white, I<sub>n</sub>=24 A, with screw terminal, 5-pole - 2.5 mm<sup>2</sup> (4 x 1.5<sup>2</sup> / 4 x 2.5<sup>2</sup>)**

IP65

2,5<sup>2</sup>

IK07



690V

AC



## Technical Data

### electrical characteristics

Rated insulation voltage AC:	690 V
Max. conductor cross section:	2,5 mm <sup>2</sup>
Protection class:	II
Type of protection:	IP65
UL Type Rating:	not specified

### Colours

Base unit colour:	white
Cover colour:	white

### Dimensions

Width:	80 mm
Length:	80 mm
Height:	52 mm

### Material characteristics

UV-resistant:	no
Halogen free:	yes
Flammability class according with UL94:	HB
Glow-wire flammability according to EN 60695-2-11:	650 °C
Industry quality:	no

### mechanical properties

for sealing range min:	2 mm
for sealing range max:	16 mm
Type of fastening:	Wall/ceiling mounting
Impact strength:	IK07
Sealable:	yes
Cover screw torque:	1 Nm

### mechanical properties

Fastening:	external fixing lugs
------------	----------------------

### Ambient conditions

max. relative humidity 25°C:	95 %
max. relative humidity 40°C:	50 %
Min. ambient temperature:	-25 °C
Max. ambient temperature:	40 °C
24h ambient temperature:	35 °C
Installation location:	Indoors

### Material

Base unit material:	Polystyrene
Cover material:	Polystyrene
Cover screw material:	Stainless steel V2A

### Certificates

Test mark:	VDE (DIN EN 60670-1/-22 (VDE 0606-1/-22))
------------	-------------------------------------------

## Accessories

- [19202001 - KS M20 - Combi set](#)
- [20342001 - WST M20 - Twist plug](#)
- [20842001 - GMU PA M20 - Lock nut](#)
- [21342001 - WNI M20 - Twist nipple](#)
- [21642001 - SNI M20 - Stepped nipple](#)
- [22702101 - KVR M20-GDB/MGM/sw - Cable gland](#)
- [22742001 - KVR M20-MGM - Cable gland](#)
- [22742101 - KVR M20-GDB/MGM - Cable gland](#)
- [23042001 - AST M20 - Attachment bushes](#)
- [23142001 - VST M20 - Sealing plugs](#)
- [24742101 - KVR M20-GDB - Cable gland](#)
- [26002001 - DMS M20/sw - Double-membrane seals](#)
- [26012001 - DMS M20/w - Double-membrane seals](#)
- [26042001 - DMS M20 - Double-membrane seals](#)
- [26202001 - BST M20/sw - Ventilation seal](#)
- [26242001 - BST M20 - Ventilation seal](#)
- [28842001 - RST M20 - Conduit connector](#)
- [84000401 - Abox 025/040 KLS-2,5<sup>2</sup>/4<sup>2</sup> - Terminal block](#)

## Cable gland

