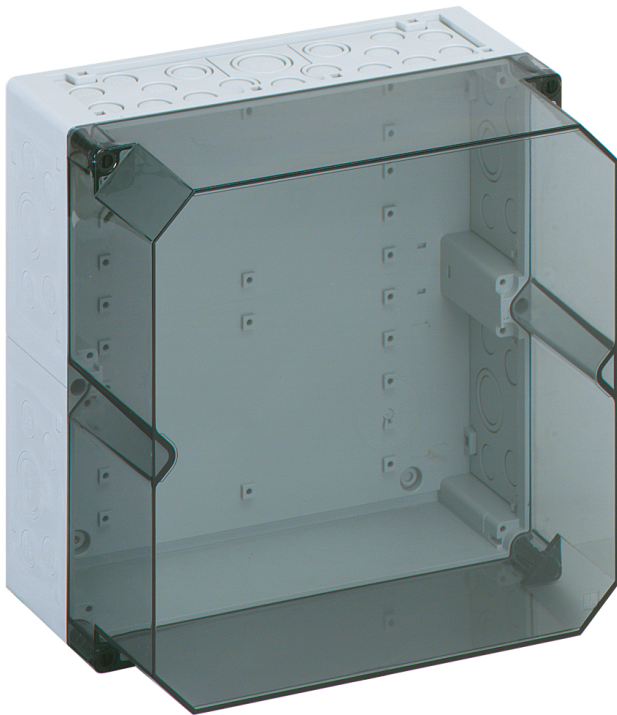


Empty enclosure

AKi 2-th



AKi 2-th

Empty enclosure

CUSTOMIZABLE

Productnumber: 74790201

Dimensions: 300 x 300 x 209 mm

Empty enclosure, protection class IP65, Polycarbonate, $U_i=690V$ AC, $U_i=1000V$ DC, internal fixing points, for installations in industrial environments and protected outdoor areas

Box: Polycarbonate, Lid: Polycarbonate, transparent, knockouts, M20/M25/M32/M40, (56 side)

Accessories supplied:

10 Double-membrane seal IP66 M20 sealing range 7 - 12 mm, 2 Double-membrane seals IP66 M25 sealing range 9 - 16 mm, 2 Double-membrane seal M32 sealing range 14 - 21 mm, 1 Double-membrane seal IP66 M40 sealing range 19 - 28 mm



Technical Data

electrical characteristics

Rated insulation voltage AC:	690 V
Rated insulation voltage DC:	1000 V
Protection class:	II
Type of protection:	IP65
UL Type Rating:	not specified

Colours

Cover colour:	transparent
---------------	-------------

Dimensions

Width:	300 mm
Length:	300 mm
Height:	209 mm

Material characteristics

UV-resistant:	yes
Halogen free:	yes
Flammability class according with UL94:	V2
Glow-wire flammability according to EN 60695-2-11:	960 °C
Industry quality:	yes

mechanical properties

Type of fastening:	Wall/ceiling mounting
Impact strength:	IK08
Sealable:	yes
Cover screw torque:	1.2 Nm
Stackable:	yes
Type of top part:	Cover
Fastening:	internal fixing points

Ambient conditions

max. relative humidity 25°C:	95 %
max. relative humidity 40°C:	50 %
Min. ambient temperature:	-35 °C
Max. ambient temperature:	80 °C
24h ambient temperature:	60 °C
Installation location:	protected outdoor areas
Location:	Installations in industrial environments and protected outdoor areas

Material

Base unit material:	Polycarbonate
Cover material:	Polycarbonate
Sealing material:	Polyurethane
Cover screw material:	Polyamide, glass-fibre reinforced

Accessories

[19000501 - ASS-gro - External hinge set](#)

[56273501 - AK NS35-250 - Standard rail](#)

[79300401 - AK ABL-ES - External fixing lugs](#)

[79500201 - AK MPI 2 - Mounting plate](#)

[79503001 - NS35-216/3 - Standard rail](#)

[79605001 - AKi ABF 2 - Enclosure wall](#)

[79791001 - AK TW - Partition wall](#)

[79031701 - AK 14 PEN-SL - Terminal rails](#)

[79032701 - AK 28 PEN-SL - Terminal rails](#)

[79031801 - AK N-SL - Terminal rails](#)

Cable gland

