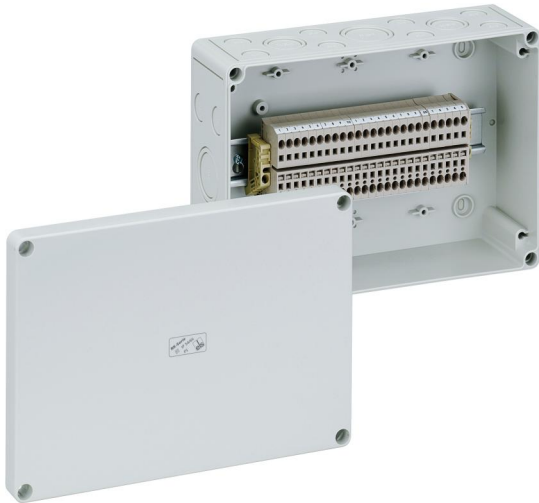


Terminal block enclosure

RK 4/25 SL-25x4²



RK 4/25 SL-25x4²

Terminal block enclosure

CUSTOMIZABLE

Productnumber: 61002501

Dimensions: 254 x 180 x 90 mm

Terminal block enclosure, protection class IP54/IP66, nominal cross-section 4 mm², Ui=400V AC, Polystyrene, internal fixing points, for standard indoor installations

equipped with 25 screwless terminals 4mm³, (type Weidmüller ZDU 4)

Accessories supplied:

8 Attachment bushes IP54 M20 sealing range 8 - 13,5 mm, 2 Attachment bushes IP54 M25 sealing range 9 - 18,5 mm, 1 Attachment bushes IP54 M32 sealing range 13 - 23 mm



To industrial product:

<https://www.spelsberg.co.uk/p/63002501>

Technical Data

electrical characteristics

Rated insulation voltage AC:	400 V
Max. conductor cross section:	4 mm ²
Protection class:	II
Type of protection:	IP54/IP66
UL Type Rating:	not specified

Dimensions

Width:	254 mm
Length:	180 mm
Height:	90 mm

Material characteristics

UV-resistant:	no
Halogen free:	yes
Flammability class according with UL94:	HB
Glow-wire flammability according to EN 60695-2-11:	650 °C
Industry quality:	no

mechanical properties

Type of fastening:	Wall/ceiling mounting
Impact strength:	IK07
Sealable:	yes
Fastening:	internal fixing points

Ambient conditions

max. relative humidity 25°C:	95 %
max. relative humidity 40°C:	50 %
Min. ambient temperature:	-25 °C
Max. ambient temperature:	40 °C

Ambient conditions

24h ambient temperature:	35 °C
Installation location:	Indoors

Material

Base unit material:	Polystyrene
Cover material:	Polystyrene
Sealing material:	Polyurethane
Cover screw material:	Polyamide, glass-fibre reinforced

Accessories

[19000101 - HBA - Mounting material](#)

[19000501 - ASS-gro - External hinge set](#)

[19010001 - VSG - Padlock kit](#)

[19202001 - KS M20 - Combi set](#)

[19202501 - KS M25 - Combi set](#)

[19202601 - KS M25-gro - Combi set](#)

[19203201 - KS M32 - Combi set](#)

[19400101 - TK ABL - External fixing lugs kit](#)

Cable gland

