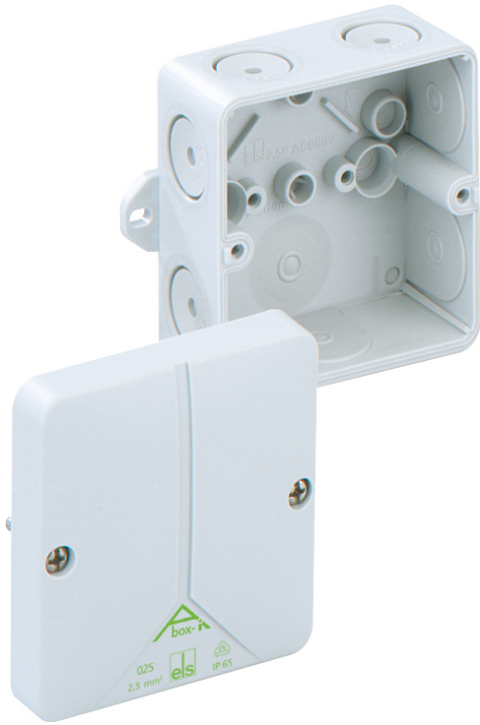


Junction box

Abox-i 025 AB-2,5²

This product is outdated. To the successor product:
<https://www.spelsberg.co.uk/p/40242101>



Abox-i 025 AB-2,5²

Junction box

CUSTOMIZABLE

Productnumber: 49440201

Dimensions: 80 x 80 x 52 mm

Junction box, protection class IP65, nominal cross-section 2.5 mm², U_i=690 V AC, certified by VDE (DIN EN 60670-1/-22 (VDE 0606-1/-22)), DLG (Ammonia resistance), DNV (Class: Ships and Offshore Installations), self-sealing, soft insertion membranes, M20, sealing range 2 - 16 mm, (1 rear, 7 side), external fixing lugs, for installations in industrial environments and protected outdoor areas

grey, I_n=24 A, with screw terminal, 5-pole - 2.5 mm² (4 x 1.5² / 4 x 2.5²)



Technical Data

electrical characteristics

Rated insulation voltage AC:	690 V
Max. conductor cross section:	2,5 mm ²
Protection class:	II
Type of protection:	IP65
UL Type Rating:	not specified

Colours

Base unit colour:	grey
Cover colour:	grey

Dimensions

Width:	80 mm
Length:	80 mm
Height:	52 mm

Material characteristics

UV-resistant:	yes
Halogen free:	yes
Flammability class according with UL94:	HB
Glow-wire flammability according to EN 60695-2-11:	650 °C
Industry quality:	yes

mechanical properties

for sealing range min:	2 mm
for sealing range max:	16 mm
Type of fastening:	Wall/ceiling mounting
Impact strength:	IK08
Sealable:	yes
Cover screw torque:	1.7 Nm

mechanical properties

Fastening:	external fixing lugs
------------	----------------------

Ambient conditions

max. relative humidity 25°C:	95 %
max. relative humidity 40°C:	50 %
Min. ambient temperature:	-35 °C
Max. ambient temperature:	80 °C
24h ambient temperature:	60 °C
Installation location:	protected outdoor areas

Material

Base unit material:	ASA-PC
Cover material:	ASA-PC
Sealing material:	Thermoplastic elastomer
Cover screw material:	Stainless steel V2A

Certificates

Test mark:	VDE (DIN EN 60670-1/-22 (VDE 0606-1/-22))
Test mark:	DLG (Ammonia resistance)
Test mark:	DNV (Class: Ships and Offshore Installations)

Accessories

[84000201 - Abox 025/040 KLH-SL 0,2/4² - Terminal holder](#)

Cable gland

