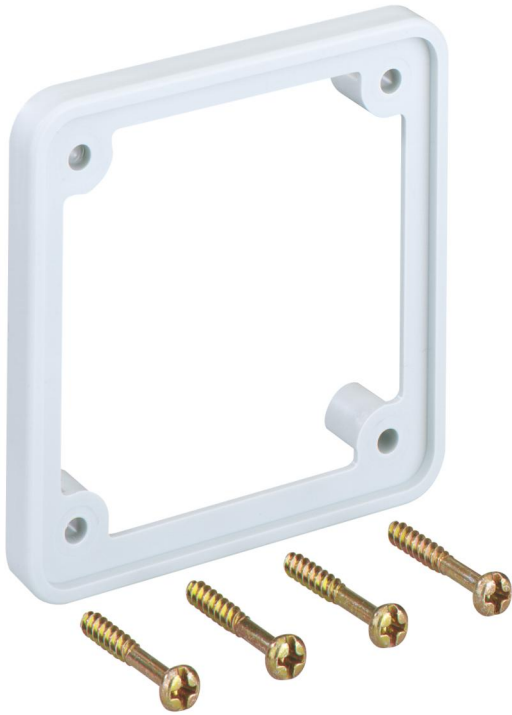


Installation kit

KD EBZ-CEE



KD EBZ-CEE

Installation kit

Productnumber: 37210001

Dimensions: 71 x 142 x 59 mm

Installation kit for CEE devices 16 A (straight design) with flange dimensions 75 x 75 mm, spacing of the fixing holes 60 mm, suitable for individual boxes

Check dimensions beforehand owing to large number of CEE devices available on the market.

Technical Data

Dimensions

Width:	71 mm
Length:	142 mm
Height:	59 mm

Material characteristics

Flammability class according with UL94:	HB
Glow-wire flammability according to EN 60695-2-11:	650 °C
Industry quality:	no

mechanical properties

Type of accessory:	other
--------------------	-------

Ambient conditions

Installation location:	Indoors
------------------------	---------