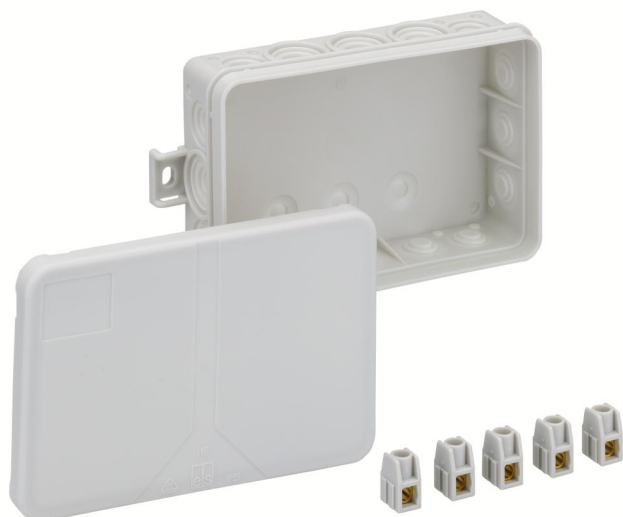


Junction box

## i 16-2,5<sup>2</sup>



### i 16-2,5<sup>2</sup>

**Junction box**

Productnumber: 33341601

Dimensions: 130 x 85 x 37 mm

Junction box, protection class IP55, nominal cross-section 2.5 mm<sup>2</sup>, U<sub>i</sub>=400 V AC, certified by VDE (DIN EN 60670-1/-22 (VDE 0606-1/-22)), self-sealing insertion membranes, sealing range 8,2 - 12,5 mm, (3 rear, 16 side), external fixing lugs, for standard indoor installations

**grey, I<sub>n</sub>=24 A, with 5 interlockable screw terminals 2.5 mm<sup>2</sup> (5 x 1<sup>2</sup> / 5 x 1.5<sup>2</sup> / 3 x 2.5<sup>2</sup>)**



## Technical Data

### electrical characteristics

Rated insulation voltage AC:	400 V
Max. conductor cross section:	2,5 mm <sup>2</sup>
Protection class:	II
Type of protection:	IP55
UL Type Rating:	not specified

### Colours

Base unit colour:	grey
Cover colour:	grey

### Dimensions

Width:	130 mm
Length:	85 mm
Height:	37 mm

### Material characteristics

UV-resistant:	no
Halogen free:	yes
Flammability class according with UL94:	HB
Glow-wire flammability according to EN 60695-2-11:	650 °C
Industry quality:	no

### mechanical properties

for sealing range min:	8.2 mm
for sealing range max:	12.5 mm
Type of fastening:	Wall/ceiling mounting
Impact strength:	IK07
Sealable:	no
Fastening:	external fixing lugs

### Ambient conditions

max. relative humidity 25°C:	95 %
max. relative humidity 40°C:	50 %
Min. ambient temperature:	-25 °C
Max. ambient temperature:	40 °C
24h ambient temperature:	35 °C
Installation location:	Indoors

### Material

Base unit material:	Polyethylene
Cover material:	Polypropylene

### Certificates

Test mark:	VDE (DIN EN 60670-1/-22 (VDE 0606-1/-22))
------------	---

## Accessories

[30040701 - VST RR - Sealing plugs](#)

[68502001 - HandyGrip VG 20 - Terminal strip](#)

[68502101 - HandyGrip VG 21 - Terminal strip](#)

[68512101 - HandyGrip VG 21 w - Terminal strip](#)

[68832001 - HandyQuick SQ 32 - Screwless terminal](#)

[68852001 - HandyQuick SQ 52 - Screwless terminal](#)

## Cable gland

