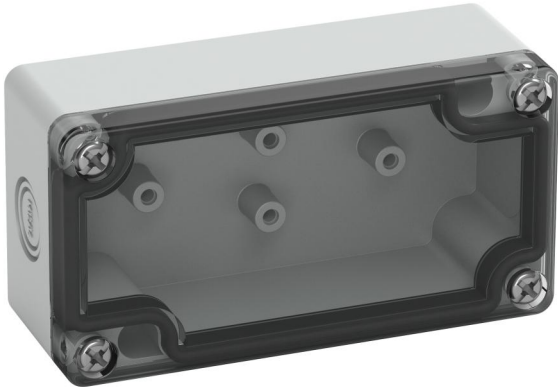


Empty enclosure

TK PC 1005-4-tm



TK PC 1005-4-tm

Empty enclosure

CUSTOMIZABLE

Productnumber: 13748001

Dimensions: 100 x 52 x 37 mm

Empty enclosure, protection class IP66, Polycarbonate, certified by UL (UL 508 & CSA C22.2 No. 14-13, UL 50 & CSA 22.2 No. 94.1-7 & UL 50E & CSA C22.2 No. 94.2-7), DLG (Ammonia resistance), DNV (Class: Ships and Offshore Installations), $U_i=690V$ AC, $U_i=1000V$ DC, internal fixing points, for installations in industrial environments and protected outdoor areas

Box: Polycarbonate, grey, Lid: Polycarbonate, transparent, knockouts, M12/M16, (1 rear, 2 side)



Technical Data

electrical characteristics

Rated insulation voltage AC:	690 V
Rated insulation voltage DC:	1000 V
Protection class:	II
Type of protection:	IP66
UL Type Rating:	4X, 12/12K

Colours

Base unit colour:	grey
Cover colour:	transparent

Dimensions

Width:	100 mm
Length:	52 mm
Height:	37 mm

Material characteristics

UV-resistant:	yes
Halogen free:	yes
Flammability class according with UL94:	V2
Glow-wire flammability according to EN 60695-2-11:	960 °C
Industry quality:	yes

mechanical properties

Type of fastening:	Wall/ceiling mounting
Impact strength:	IK08
Sealable:	yes
Cover screw torque:	1.2 Nm
Stackable:	yes
Type of top part:	Cover

mechanical properties

Fastening:	internal fixing points
------------	------------------------

Ambient conditions

max. relative humidity 25°C:	95 %
max. relative humidity 40°C:	50 %
Min. ambient temperature:	-35 °C
Max. ambient temperature:	80 °C
24h ambient temperature:	60 °C
Installation location:	protected outdoor areas
Location:	Installations in industrial environments and protected outdoor areas

Material

Base unit material:	Polycarbonate
Cover material:	Polycarbonate
Sealing material:	Polyurethane
Cover screw material:	Stainless steel V2A

Certificates

Test mark:	UL (UL 508 & CSA C22.2 No. 14-13, UL 50 & CSA 22.2 No. 94.1-7 & UL 50E & CSA C22.2 No. 94.2-7)
Test mark:	DLG (Ammonia resistance)
Test mark:	DNV (Class: Ships and Offshore Installations)

Accessories

[19020001 - TK ES-55/75/1005 - Installation screw](#)

Cable gland

