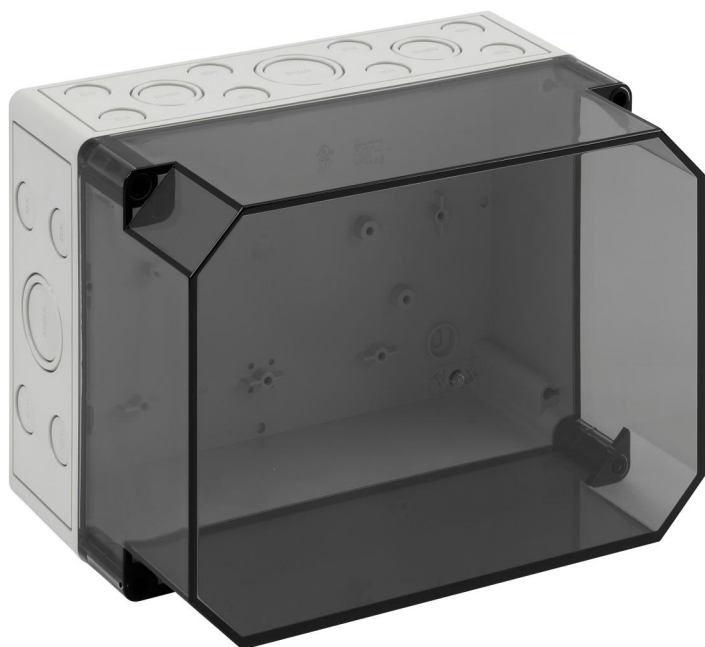


Empty enclosure

TK PS 2518-16-tm



TK PS 2518-16-tm

Empty enclosure

CUSTOMIZABLE

Productnumber: 10700801

Dimensions: 254 x 180 x 165 mm

Empty enclosure, protection class IP66, Polystyrene, Ui=690V AC, Ui=1000V DC, internal fixing points, for standard indoor installations

Box: Polystyrene, grey, Lid: Polycarbonate, transparent, knockouts, M20/M25/M32/M40, (32 side)



To industrial product:

<https://www.spelsberg.co.uk/p/13800801>

Technical Data

electrical characteristics

Rated insulation voltage AC:	690 V
Rated insulation voltage DC:	1000 V
Protection class:	II
Type of protection:	IP66
vented:	no
UL Type Rating:	not specified

Colours

Base unit colour:	grey
Cover colour:	transparent

Dimensions

Width:	254 mm
Length:	180 mm
Height:	165 mm

Material characteristics

UV-resistant:	no
Halogen free:	yes
Flammability class according with UL94:	HB
Glow-wire flammability according to EN 60695-2-11:	650 °C
Industry quality:	no

mechanical properties

Type of fastening:	Wall/ceiling mounting
Impact strength:	IK07
Sealable:	yes
Cover screw torque:	1.2 Nm
Flange variant:	no

mechanical properties

Stackable:	yes
Type of top part:	Cover
Fastening:	internal fixing points

Ambient conditions

max. relative humidity 25°C:	95 %
max. relative humidity 40°C:	50 %
Min. ambient temperature:	-25 °C
Max. ambient temperature:	40 °C
24h ambient temperature:	35 °C
Installation location:	Indoors
Location:	Standard indoor installations

Material

Base unit material:	Polystyrene
Cover material:	Polycarbonate
Sealing material:	Polyurethane
Cover screw material:	Polyamide, glass-fibre reinforced

Accessories

[89603201 - MABF 150-3 - Mast/pipe fixing set](#)

[19400101 - TK ABL - External fixing lugs kit](#)

[19000501 - ASS-gro - External hinge set](#)

[19000101 - HBA - Mounting material](#)

[19500801 - TK MPI-2518 - Mounting plate](#)

[19821601 - NS 35-216 - Standard rail](#)

Cable gland

