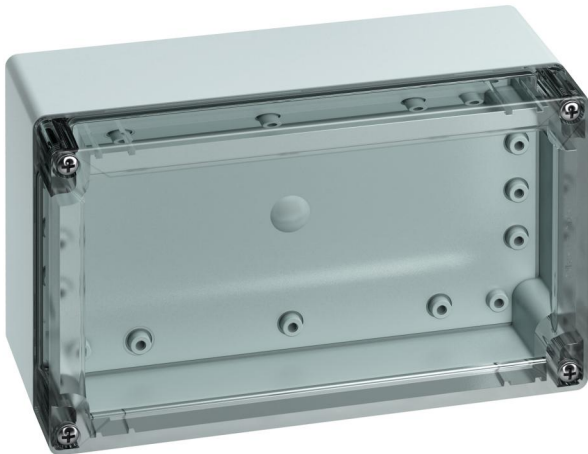


Empty enclosure

## TG ABS 2012-9-to



### TG ABS 2012-9-to

Empty enclosure

CUSTOMIZABLE

Productnumber: 10150801

Dimensions: 202 x 122 x 90 mm

Empty enclosure, protection class IP66/IP67, ABS, Ui=690V AC, Ui=1000V DC, internal fixing points, for standard installations indoors, with quick release

**Box: ABS, grey, Lid: Polycarbonate, transparent, smooth sidewalls**

**Accessories supplied:  
Cover retainer, 4 fastening screws for accessories**



To industrial product:  
<https://www.spelsberg.co.uk/p/20150801>

## Technical Data

### electrical characteristics

|                              |               |
|------------------------------|---------------|
| Rated insulation voltage AC: | 690 V         |
| Rated insulation voltage DC: | 1000 V        |
| Protection class:            | II            |
| Type of protection:          | IP66/IP67     |
| UL Type Rating:              | not specified |

### Colours

|                   |             |
|-------------------|-------------|
| Base unit colour: | grey        |
| Cover colour:     | transparent |

### Dimensions

|         |        |
|---------|--------|
| Width:  | 202 mm |
| Length: | 122 mm |
| Height: | 90 mm  |

### Material characteristics

|  |        |
|--|--------|
| UV-resistant:                                      | no     |
| Halogen free:                                      | yes    |
| Flammability class according with UL94:            | HB     |
| Glow-wire flammability according to EN 60695-2-11: | 650 °C |
| Industry quality:                                  | no     |

### mechanical properties

|                    |                        |
|--------------------|------------------------|
| Type of fastening: | Wall/ceiling mounting  |
| Impact strength:   | IK07                   |
| Stackable:         | yes                    |
| Type of top part:  | Cover                  |
| Fastening:         | internal fixing points |

## Ambient conditions

|                              |                               |
|------------------------------|-------------------------------|
| max. relative humidity 25°C: | 95 %                          |
| max. relative humidity 40°C: | 50 %                          |
| Min. ambient temperature:    | -25 °C                        |
| Max. ambient temperature:    | 40 °C                         |
| 24h ambient temperature:     | 35 °C                         |
| Installation location:       | Indoors                       |
| Location:                    | Standard indoor installations |

## Material

|                       |                     |
|-----------------------|---------------------|
| Base unit material:   | ABS                 |
| Cover material:       | Polycarbonate       |
| Sealing material:     | Polyurethane        |
| Cover screw material: | Stainless steel V2A |

## Accessories

[18200201 - TG ABL - External fixing lugs kit](#)

[18200101 - TG ISS - Interior hinge set](#)

[18200501 - TG PST2 - Sealing kit](#)

[18200701 - TG DVS-57 - Cover retainer](#)

[18600801 - TG MPI-2012 - Mounting plate](#)

[18700801 - TG MPS-2012 - Mounting plate](#)

[19599501 - LFR - Stepped drill](#)

[19718601 - TS 15-184 - Standard rail](#)

[19818601 - NS 35-184 - Standard rail](#)

[26241201 - DAE M12 - Pressure balance element](#)