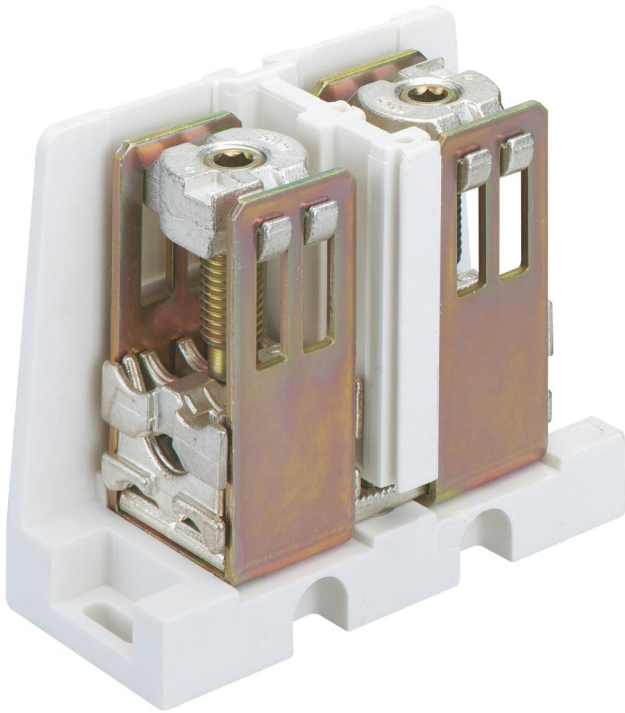


Terminal

## AKL 163



### AKL 163

**Terminal**

Productnumber: 07616301

Dimensions: 72 x 140 x 127 mm

Connecting terminal, 1-pole, stackable, for one or more-wired leads and for laminated flat copper

**630A, for CU conductors 1x (150-300)re/rm/se/sm, 2x (35-185)re/rm/se/sm, for AL conductors 1x (150-300)re/rm/se/sm, 1x (150-240)sm, 2x (35-185)re/se, 2x (95-185)sm**

## Technical Data

### electrical characteristics

Rated operating voltage AC:	690 V
Rated operating voltage DC:	750 V
Rated current:	630 A
Number of poles:	1
shockproof:	No
Connection 1: Connection type:	Screws
Connection 1: Strip length:	45 mm
Connection 1: Clamping points per pole:	2
Connection 1: Suitable for Cu conductors:	1
Connection 1: Suitable for Al conductors:	1
Connection 1: Connectable conductor cross-section, single-wire (min):	150 mm <sup>2</sup>
Connection 1: Connectable conductor cross-section, single-wire (max):	300 mm <sup>2</sup>
Connection 1: Connectable conductor cross-section, stranded (min):	150 mm <sup>2</sup>
Connection 1: Connectable conductor cross-section, stranded (max):	300 mm <sup>2</sup>
Connection 2: Connection type:	Screws
Connection 2: Stripping length:	45 mm
Connection 2: Clamping points per pole:	2
Connection 2: Suitable for Cu conductors:	1
Connection 2: Suitable for Al conductors:	1
Connection 2: Connectable conductor cross-section, single-wire (min):	35 mm <sup>2</sup>
Connection 2: Connectable conductor cross-section, single-wire (max):	70 mm <sup>2</sup>
Connection 2: Connectable conductor cross-section, stranded (min):	35 mm <sup>2</sup>
Connection 2: Connectable conductor cross-section, stranded (max):	185 mm <sup>2</sup>

### Dimensions

Width:	72 mm
--------	-------

### Dimensions

Length:	140 mm
Height:	127 mm

### Material characteristics

Glow-wire flammability according to EN 60695-2-11:	960 °C
Industry quality:	no

### mechanical properties

Connection 1: Tightening moment:	50 Nm
Connection 2: Tightening torque:	50 Nm

### Material

Insulating body material:	Thermoplastic
---------------------------	---------------