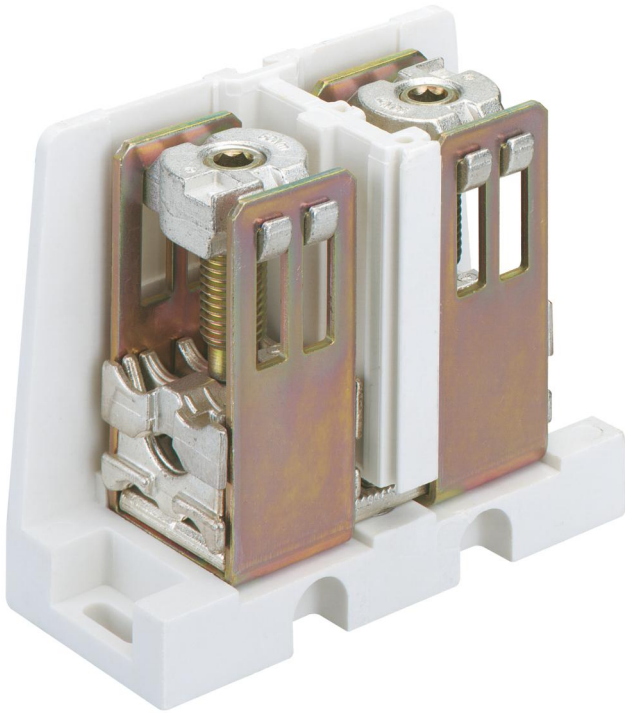


Terminal

AKL 140



AKL 140

Terminal

Productnumber: 07614001

Dimensions: 55 x 115 x 120 mm

Connecting terminal, 1-pole, stackable, for one or more-wired leads and for laminated flat copper

400 A, for CU conductors 1x (50-240)re/rm/se/sm, 2x (25-120)re/rm/se/sm, for AL conductors 1x (50-240)re/rm/se/sm, 1x (95-195)sm, 2x (25-120)re/se, 2x (50-95)sm, for laminated flat copper 16 x 10 mm

Technical Data

electrical characteristics

Rated operating voltage AC:	690 V
Rated operating voltage DC:	750 V
Rated current:	400 A
Number of poles:	1
shockproof:	No
Connection 1: Connection type:	Screws
Connection 1: Strip length:	30 mm
Connection 1: Clamping points per pole:	2
Connection 1: Suitable for Cu conductors:	1
Connection 1: Suitable for Al conductors:	1
Connection 1: Connectable conductor cross-section, single-wire (min):	25 mm ²
Connection 1: Connectable conductor cross-section, single-wire (max):	50 mm ²
Connection 1: Connectable conductor cross-section, stranded (min):	25 mm ²
Connection 1: Connectable conductor cross-section, stranded (max):	240 mm ²
Connection 2: Connection type:	Screws
Connection 2: Stripping length:	30 mm
Connection 2: Clamping points per pole:	2
Connection 2: Suitable for Cu conductors:	1
Connection 2: Suitable for Al conductors:	1
Connection 2: Connectable conductor cross-section, single-wire (min):	25 mm ²
Connection 2: Connectable conductor cross-section, single-wire (max):	50 mm ²
Connection 2: Connectable conductor cross-section, stranded (min):	25 mm ²
Connection 2: Connectable conductor cross-section, stranded (max):	120 mm ²

Dimensions

Width:	55 mm
--------	-------

Dimensions

Length:	115 mm
Height:	120 mm

Material characteristics

Glow-wire flammability according to EN 60695-2-11:	960 °C
Industry quality:	no

mechanical properties

Connection 1: Tightening moment:	40 Nm
Connection 2: Tightening torque:	40 Nm

Material

Insulating body material:	Thermoplastic
---------------------------	---------------