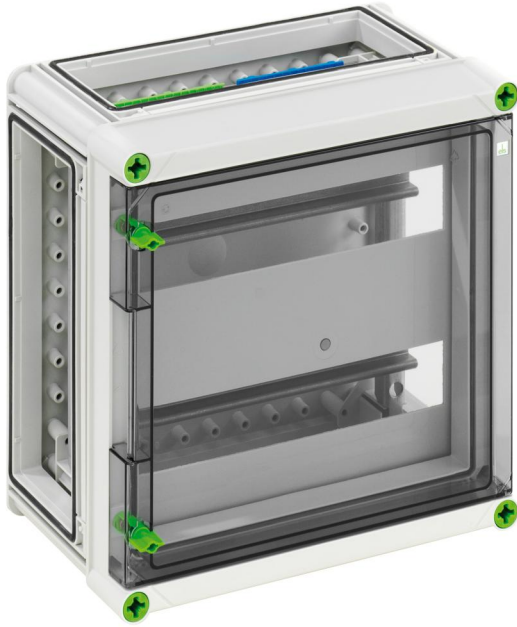


Distribution board

GTA 228-KT-t



GTA 228-KT-t

Distribution board

CUSTOMIZABLE

Productnumber: 01622801

Dimensions: 320 x 320 x 179 mm

Module enclosure - Industrial Quality -, 2-row, PE/N terminal, with each 2 clamping points 16 mm², 10 clamping points 6 mm², masking and labelling strips, 3 x enclosure connectors (GGV)

with transparent hinged door



Technical Data

electrical characteristics

Rated insulation voltage AC:	400 V
Protection class:	II
Type of protection:	IP65
vented:	no
Number of rows:	2
Number of modules:	28
Number of modules per row:	14
UL Type Rating:	3R

Colours

Base unit colour:	grey
Cover colour:	transparent

Dimensions

Width:	320 mm
Length:	320 mm
Height:	179 mm
Inner height:	157 mm

Material characteristics

UV-resistant:	yes
Halogen free:	yes
Flammability class according with UL94:	V2
Glow-wire flammability according to EN 60695-2-11:	960 °C
Industry quality:	yes

mechanical properties

Type of fastening:	Surface mounting
Impact strength:	IK08

mechanical properties

Sealable:	yes
Cover screw torque:	2.5 Nm
Flange variant:	yes
Stackable:	yes

Ambient conditions

max. relative humidity 25°C:	95 %
max. relative humidity 40°C:	50 %
Min. ambient temperature:	-25 °C
Max. ambient temperature:	40 °C
24h ambient temperature:	35 °C
Installation location:	protected outdoor areas

Material

Base unit material:	Polycarbonate
Cover material:	Polycarbonate
Sealing material:	Polyurethane
Cover screw material:	Polyamide, glass-fibre reinforced

Accessories

[07251201 - GFS 12-m - Flange set](#)